



ERETZ-ARD
أرض-ארץ



FEDERAL FORUM
المنتدى الفيدرالي
הפורום הפדרלי

The Jerusalem Union

Our Current Reality - Economy

- Economic Disparity Between Israel and Palestine
- “Dual Economy” in Israel

GDP per capita in Israel and the West Bank and Gaza

Annually; 1994–2023



Note: West Bank and Gaza GDP data is unavailable for 2022 and 2023; Data: [IMF](#); Chart: Axios Visuals

Our Current Reality - Economy

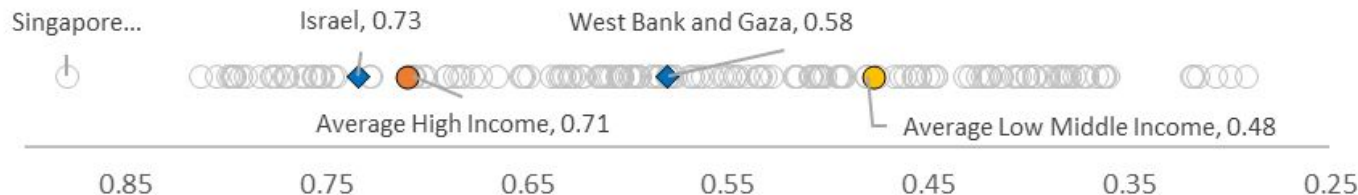
- Palestinian Dependence on Israel Economy
- High Human Capital Index

Share of Palestinians Employed in Israel of all employed Palestinians and Unemployment Rate in Palestine



Source: PCBS

Human Capital Index in Israel and Palestine (West Bank and Gaza)



State and Federal Territories

The Jerusalem Union

State and Federal Territories

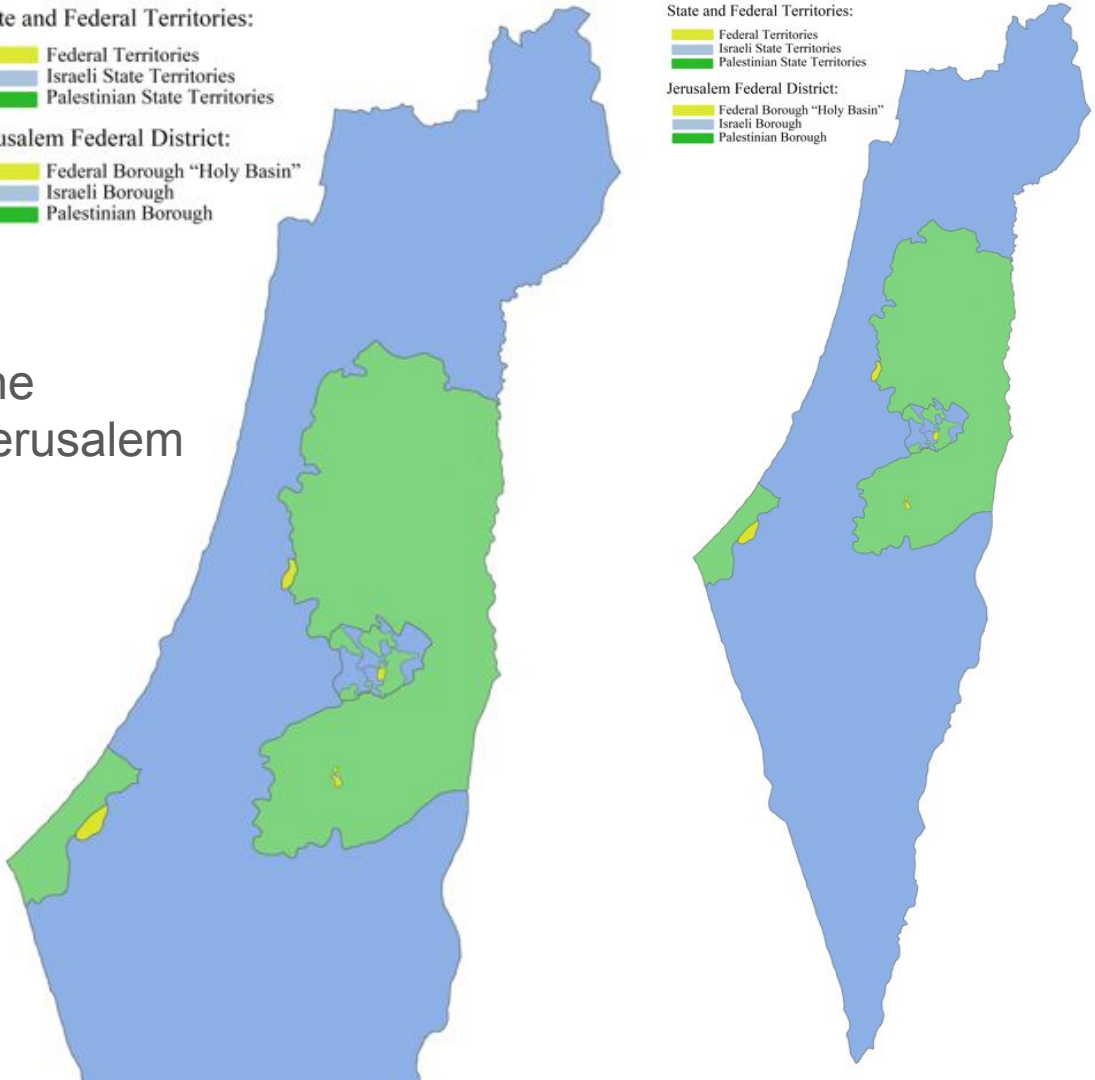
State and Federal Territories:
Federal Territories (Yellow)
Israeli State Territories (Blue)
Palestinian State Territories (Green)

Jerusalem Federal District:
Federal Borough "Holy Basin" (Yellow)
Israeli Borough (Blue)
Palestinian Borough (Green)

State and Federal Territories:
Federal Territories (Yellow)
Israeli State Territories (Blue)
Palestinian State Territories (Green)

Jerusalem Federal District:
Federal Borough "Holy Basin" (Yellow)
Israeli Borough (Blue)
Palestinian Borough (Green)

- 2 States - Israel and Palestine
- 1 Federal Capital District - Jerusalem
- Soft Borders

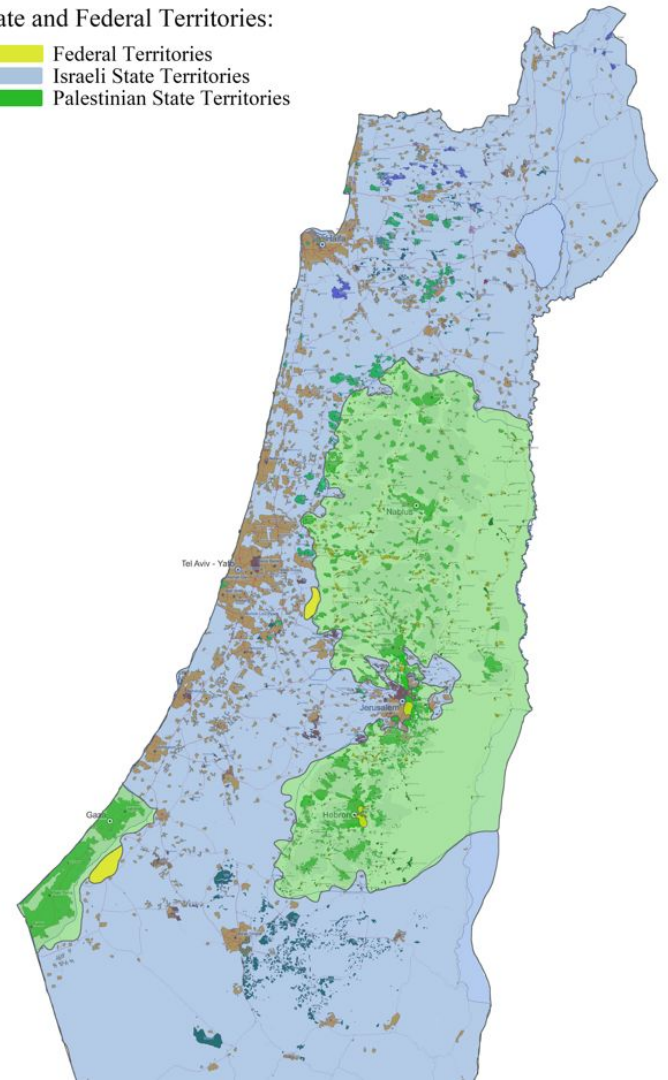


Partition into 2 States

- Based on pre 67 lines with minor adjustments
- Special Arrangements for Jerusalem

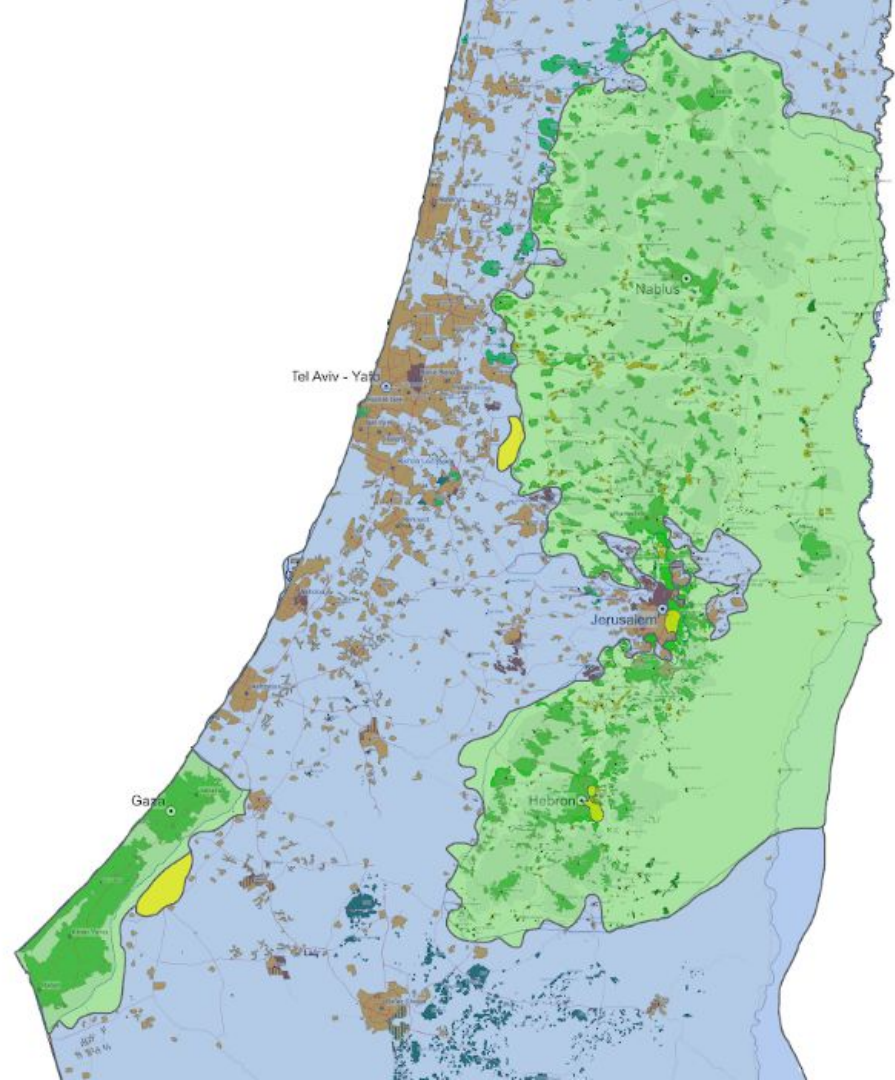
State and Federal Territories:

- Federal Territories
- Israeli State Territories
- Palestinian State Territories






Partition into 2 States

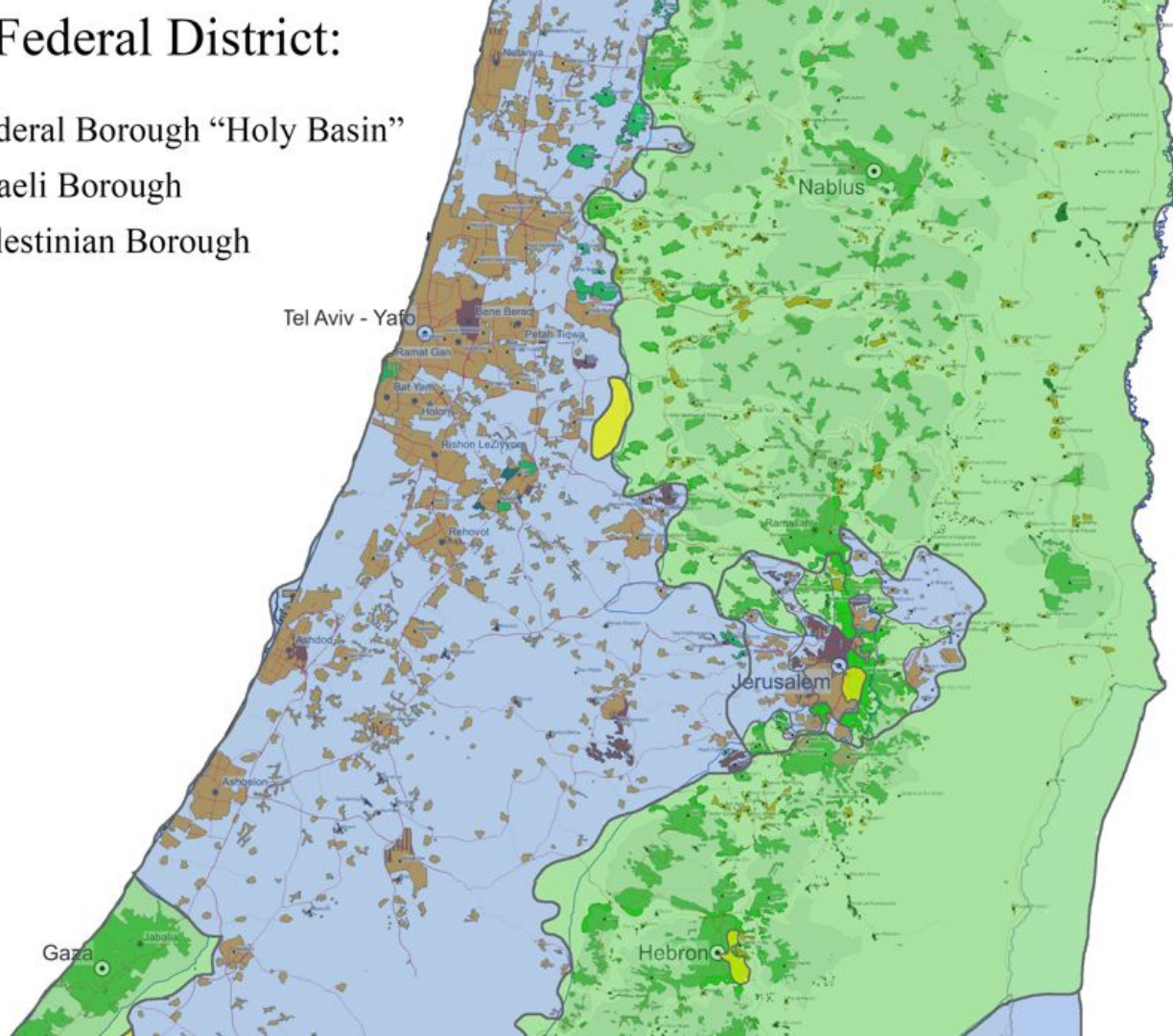
- Based on pre 67 lines with minor adjustments (similar to 'Geneva Initiative')
- Special Arrangements for Jerusalem



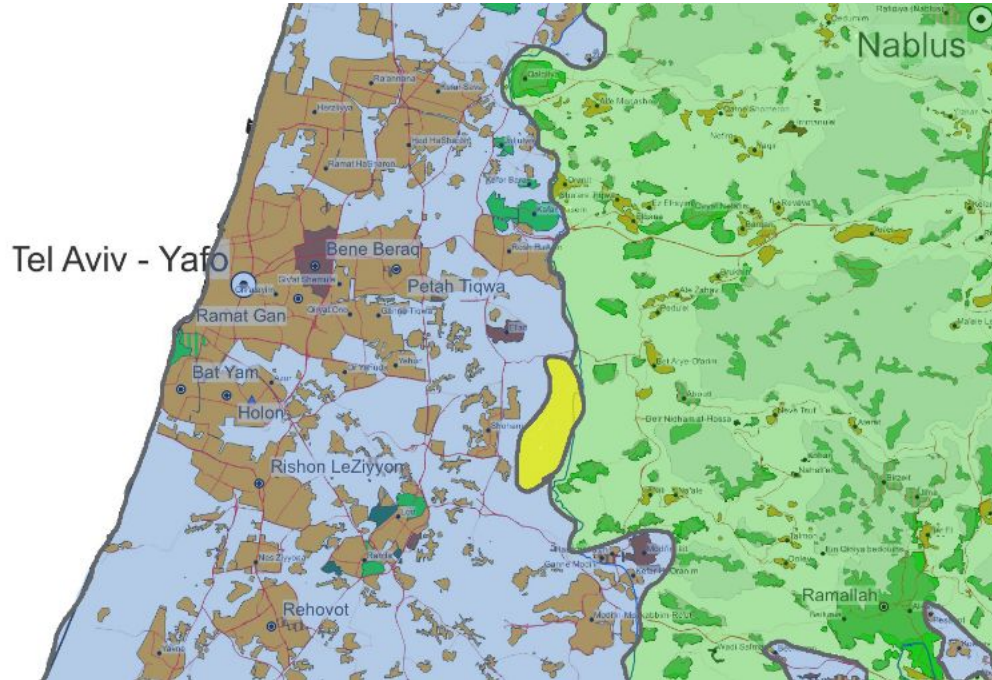
Jerusalem Federal District:

-  Federal Borough “Holy Basin”
-  Israeli Borough
-  Palestinian Borough

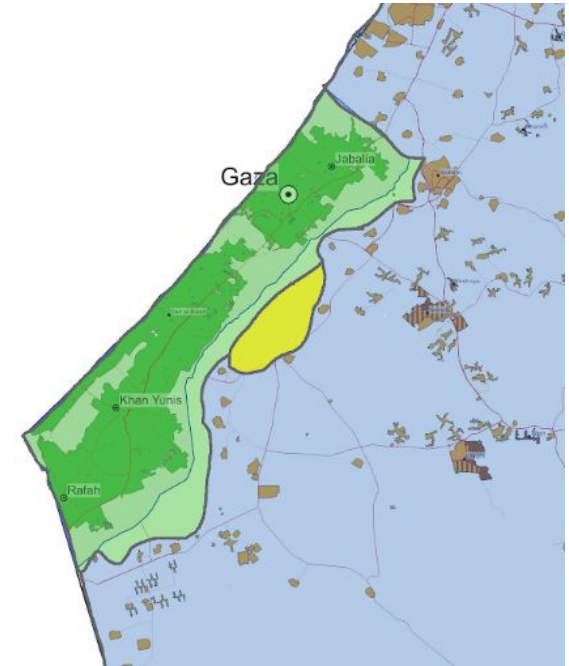
- “Clinton Parameters” in Jerusalem
- Enlarged Jerusalem Federal District region



Federal Economic Districts



West Bank-Israel Federal Economic District



Gaza-Israel Federal Economic District

Semi-Autonomous Electoral Districts

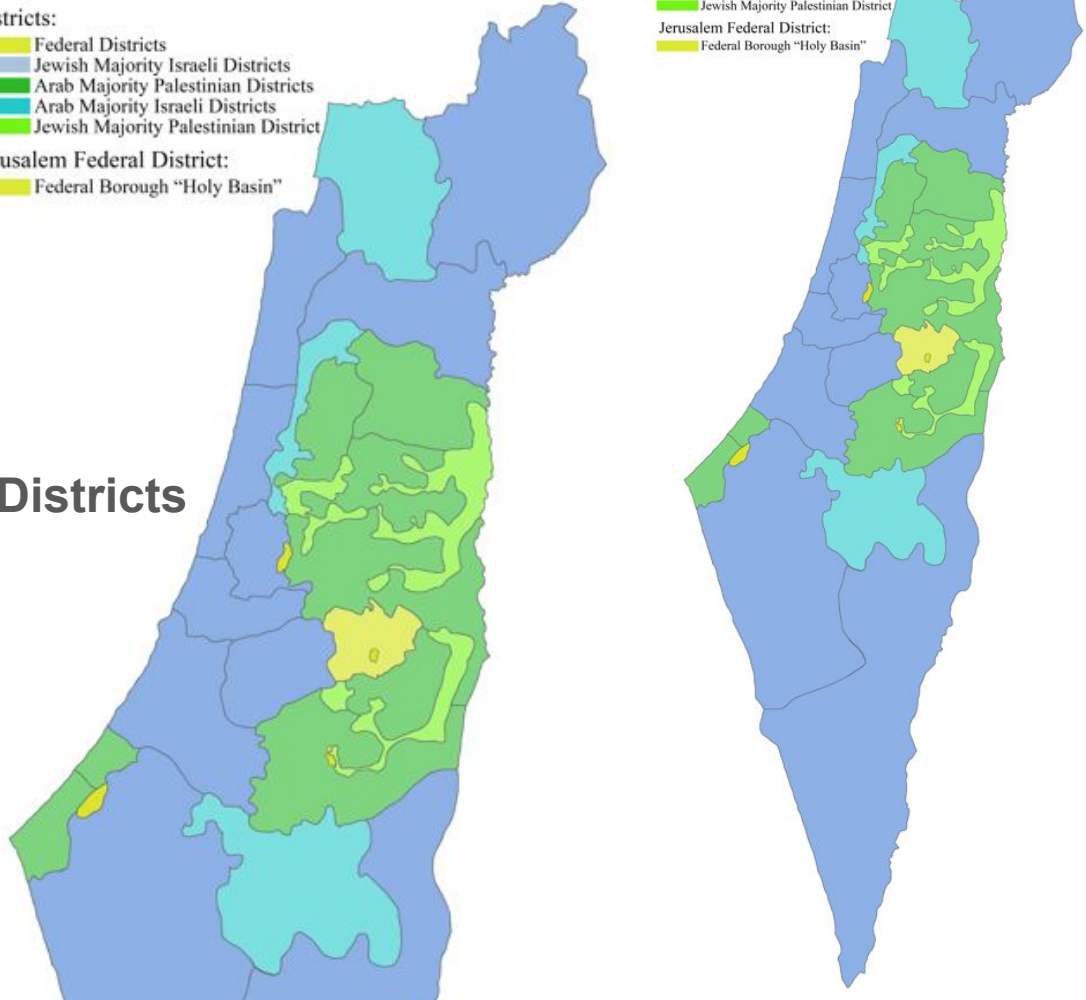
The Jerusalem Union

Semi-Autonomous Electoral Districts

- Districts:
- Federal Districts
 - Jewish Majority Israeli Districts
 - Arab Majority Palestinian Districts
 - Arab Majority Israeli Districts
 - Jewish Majority Palestinian District
- Jerusalem Federal District:
- Federal Borough "Holy Basin"

- Districts:
- Federal Districts
 - Jewish Majority Israeli Districts
 - Arab Majority Palestinian Districts
 - Arab Majority Israeli Districts
 - Jewish Majority Palestinian District
- Jerusalem Federal District:
- Federal Borough "Holy Basin"

- 1 Jerusalem Federal District
- 11 Jewish Majority Districts
- 11 Palestinian Arab Majority Districts

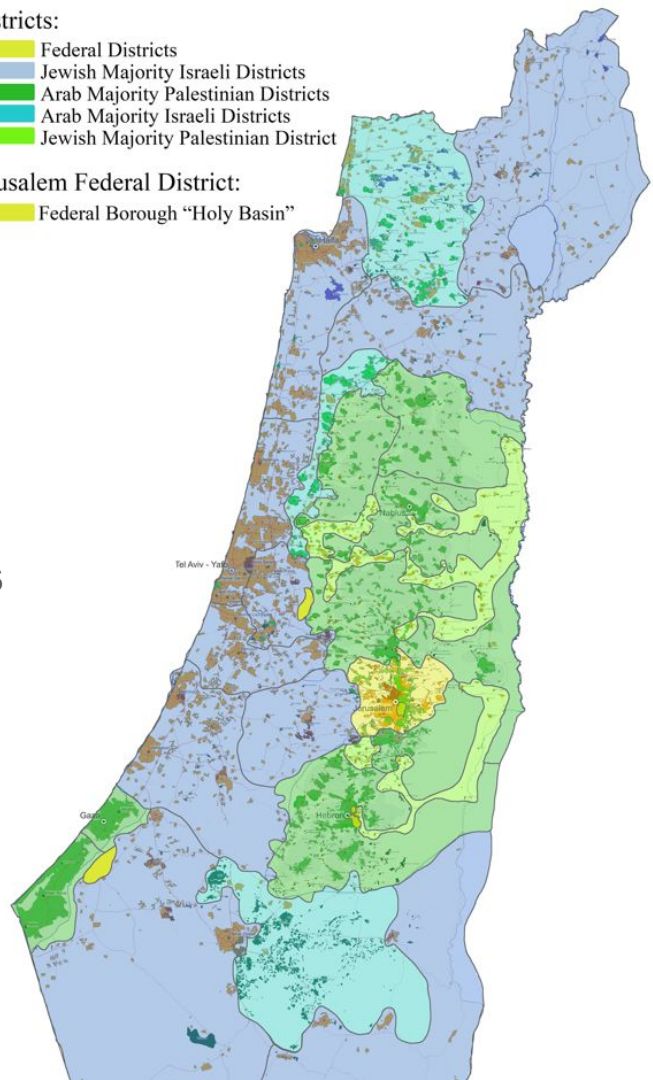


Semi-Autonomous Electoral Districts

- Districts:
- Federal Districts
 - Jewish Majority Israeli Districts
 - Arab Majority Palestinian Districts
 - Arab Majority Israeli Districts
 - Jewish Majority Palestinian District

- Jerusalem Federal District:
- Federal Borough "Holy Basin"

- 1 Jerusalem Federal District
- 11 Jewish Majority Districts
- 11 Palestinian Arab Majority Districts



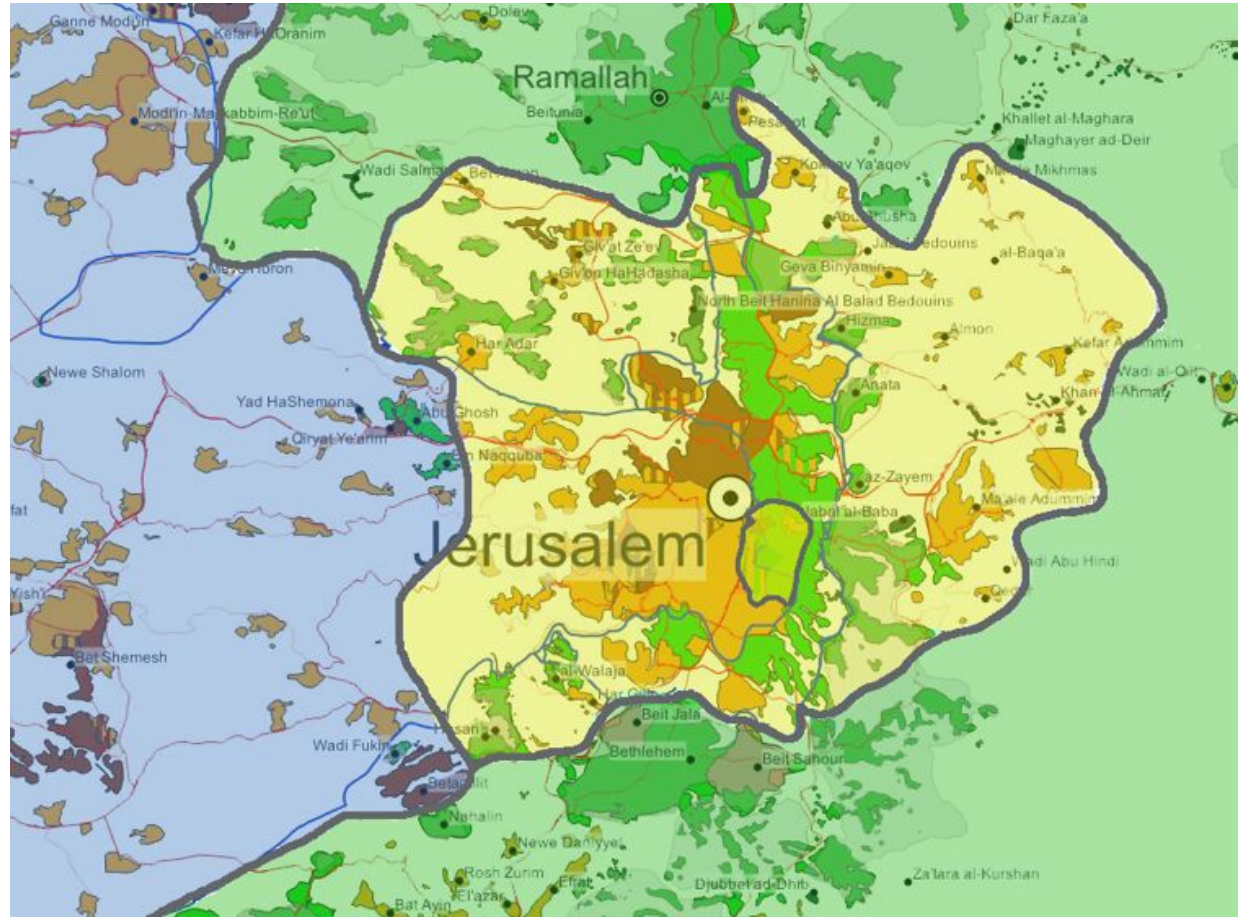
Jerusalem Federal District



The Jerusalem Union

Jerusalem Federal District

- three times the size of the current Municipal Jerusalem
- 30% more population than the current Municipality
- No checkpoints or barriers

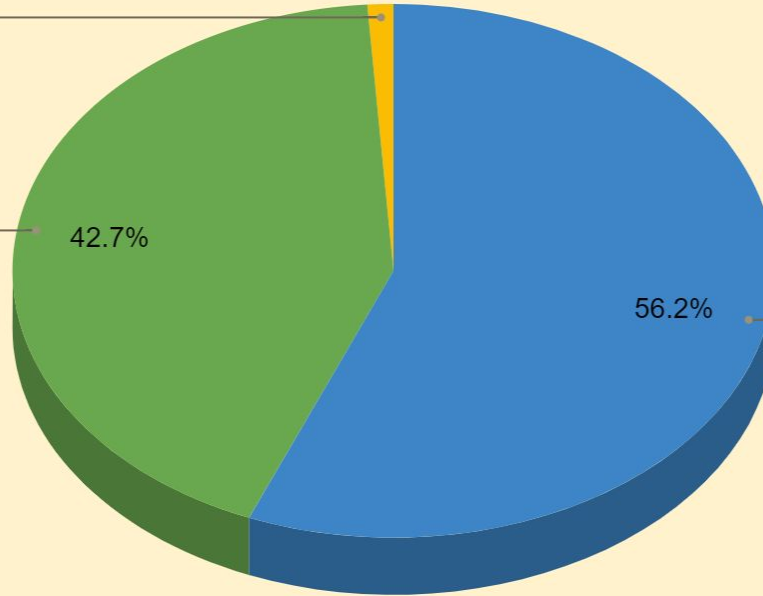


Demographics: Jerusalem Federal District

Jerusalem Federal District, Jerusalem Union year 0

Others
1.1%

Arab Palestinians
42.7%



Jews
56.2%

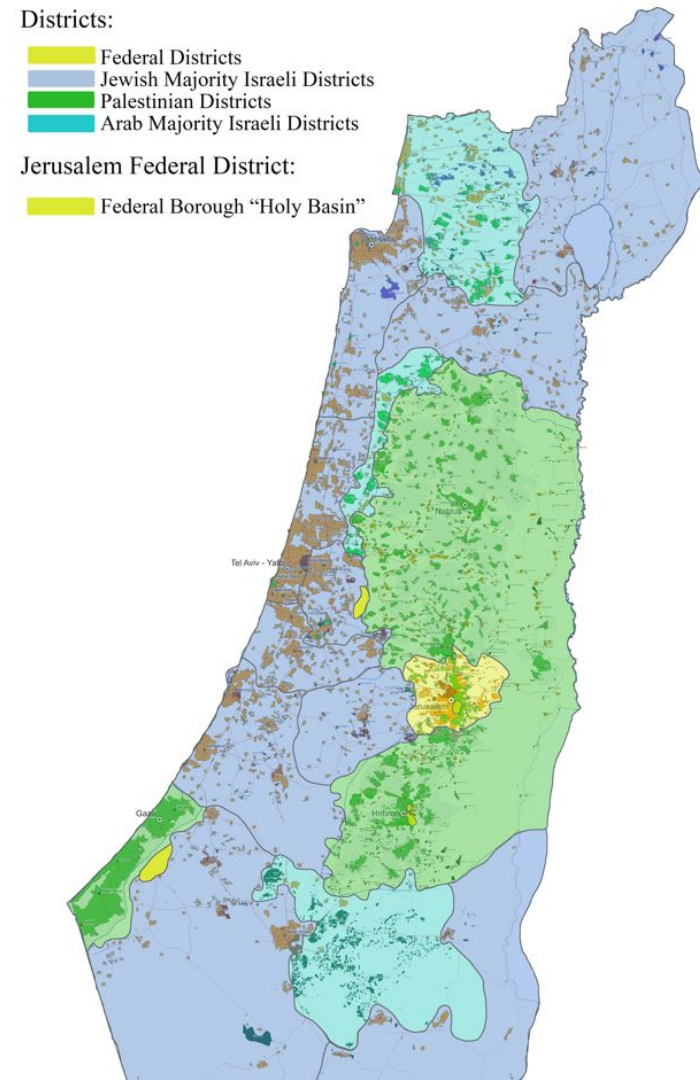
The State of Israel



The Jerusalem Union

The State of Israel - 15 Electoral Districts

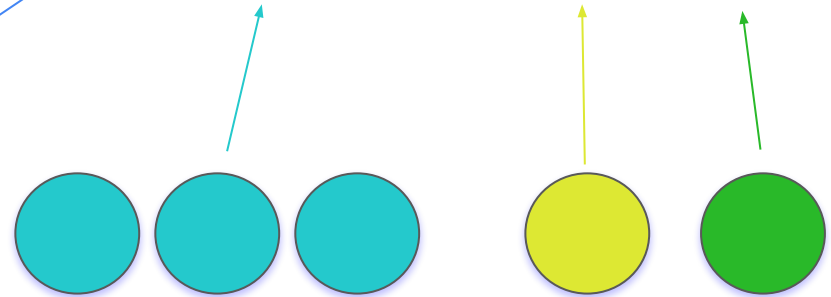
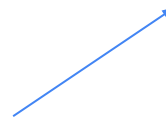
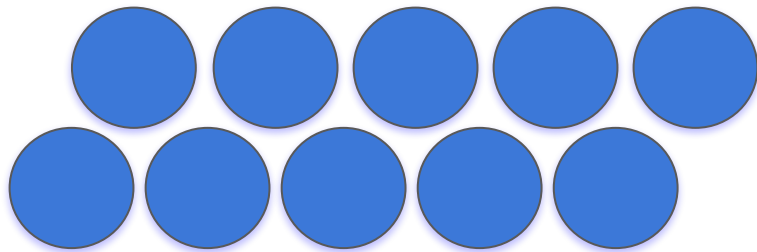
- 10 Jewish Majority Districts in the State of Israel
- 3 Palestinian Arab Majority Districts in the State of Israel (on 14% of Israeli territory)
- 1 Israeli Citizens living in Jerusalem District
- 1 Israeli Citizens living in the State of Palestine



The State of Israel - 15 Electoral Districts



- 10 Jewish Majority Districts in the State of Israel
- 3 Palestinian Arab Majority Districts in the State of Israel
- 1 Israeli Citizens living in Jerusalem District
- 1 Israeli Citizens living in the State of Palestine



The State of Israel - Bicameral Parliament

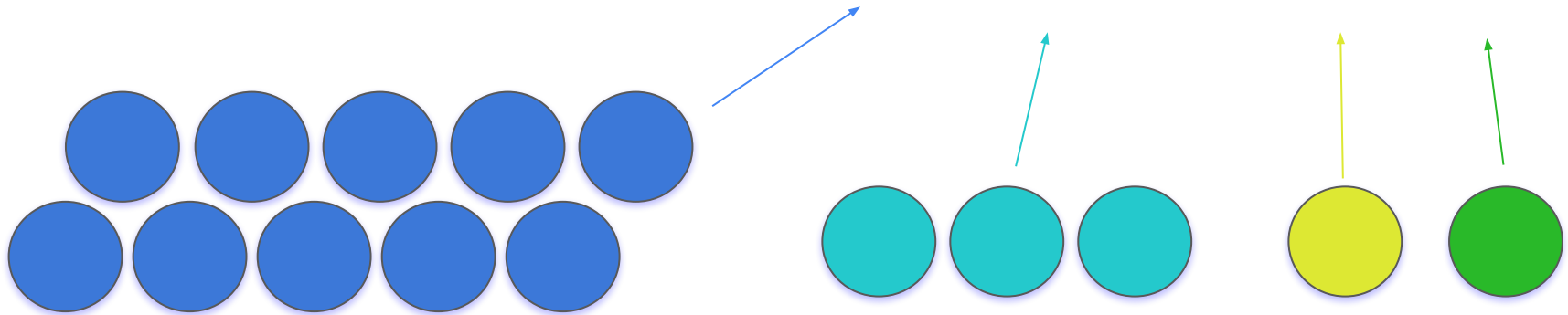


Upper House:

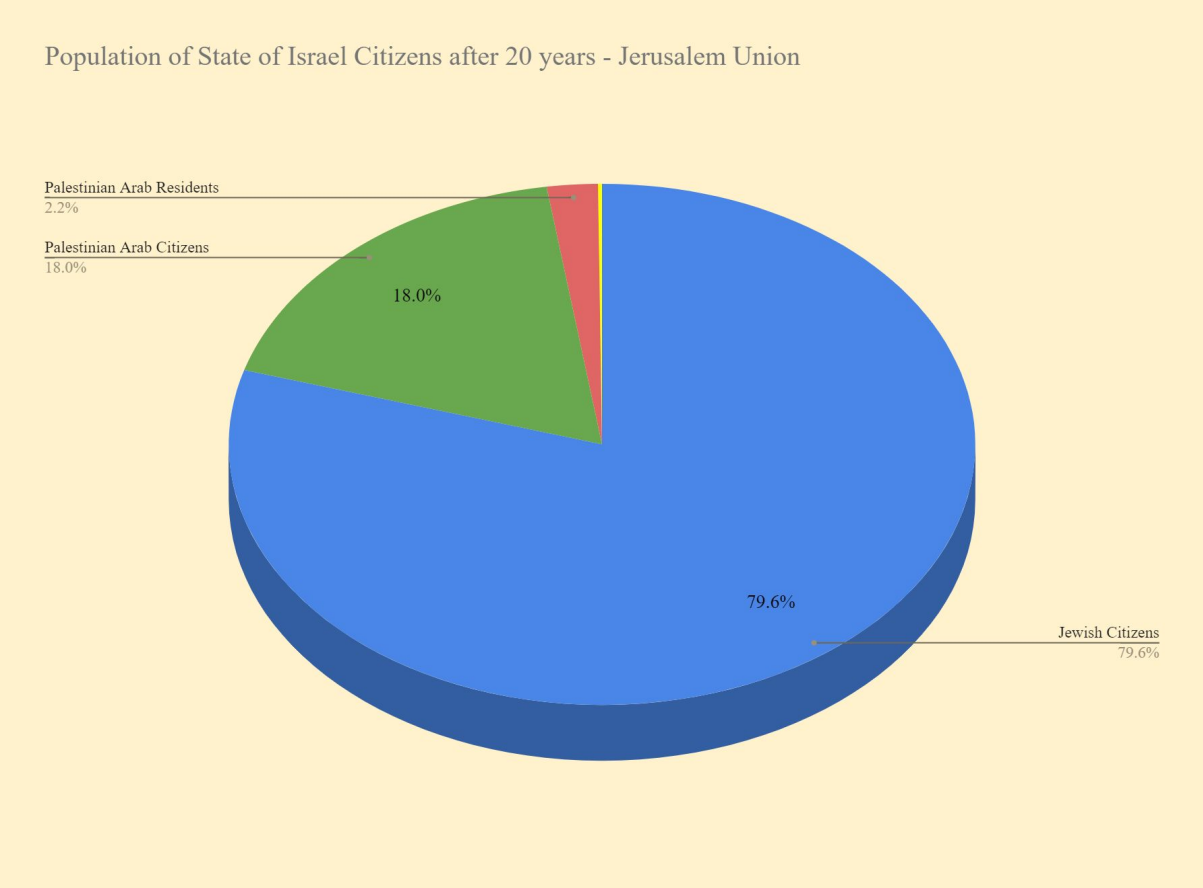
- 4 Representatives from each District

Lower House:

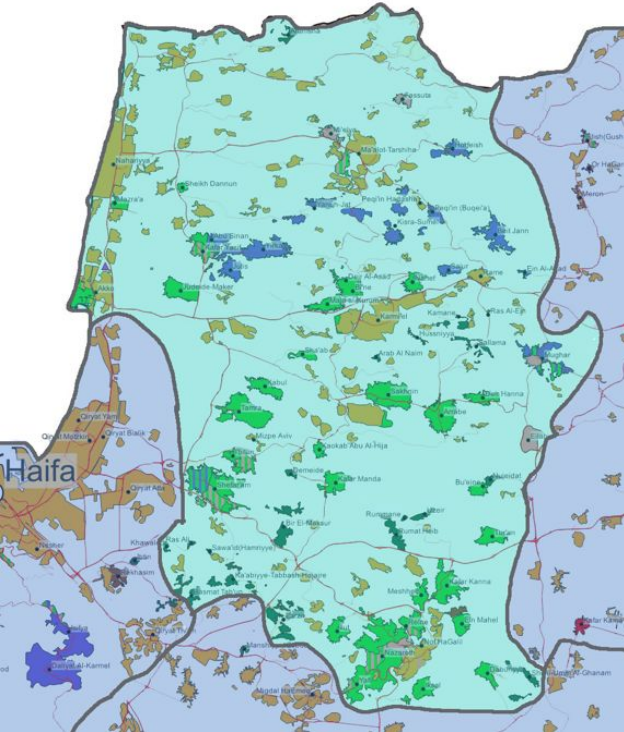
- 120 Representatives total
- Apportioned to District by population



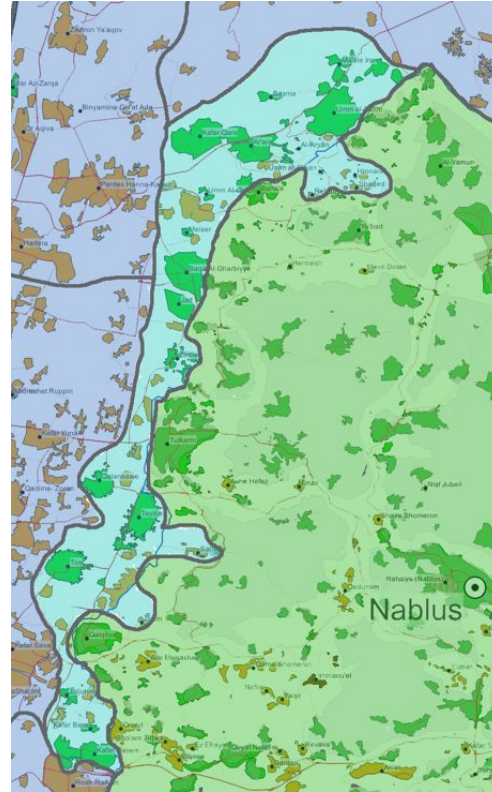
Demographics: State of Israel



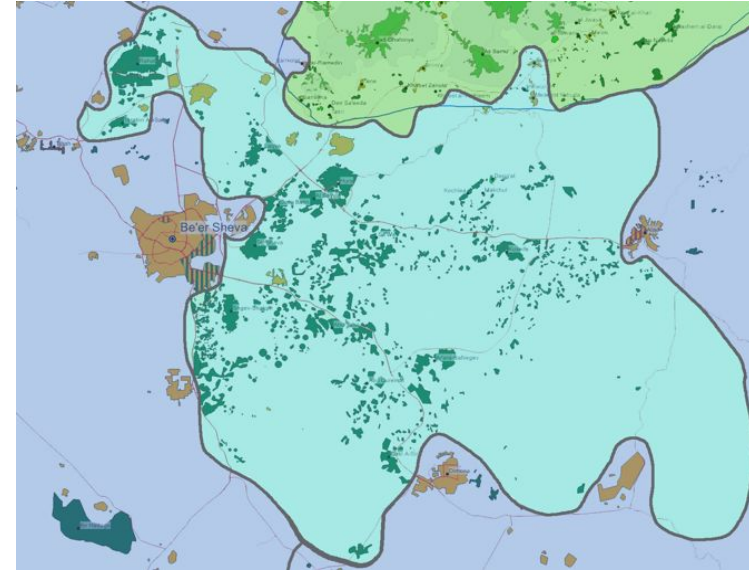
The State of Israel - 3 Palestinian Arab Majority Districts



Nazareth District



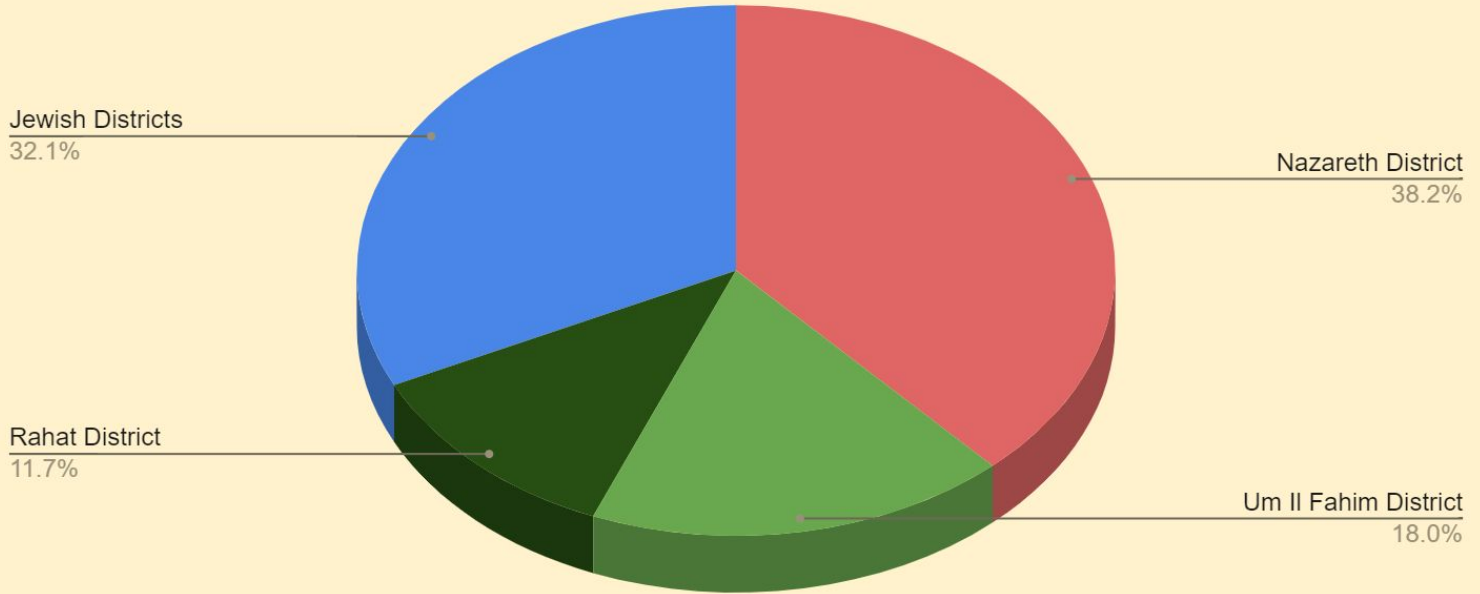
Um Il-Fahim District



Rahat District

Demographics: Palestinian Arab Citizens of Israel

Palestinian Arab population in Israel in Jerusalem Union year 0



The State of Palestine







The Jerusalem Union

The State of Palestine - 11 Electoral Districts

- **8 Palestinian Arab Majority Districts in the State of Palestine**
- **1 Jewish Majority District in the State of Palestine (on 14% of Palestinian Territory)**
- **1 Palestinian Citizens living in Jerusalem District**
- **1 Palestinian Citizens living in the State of Israel**

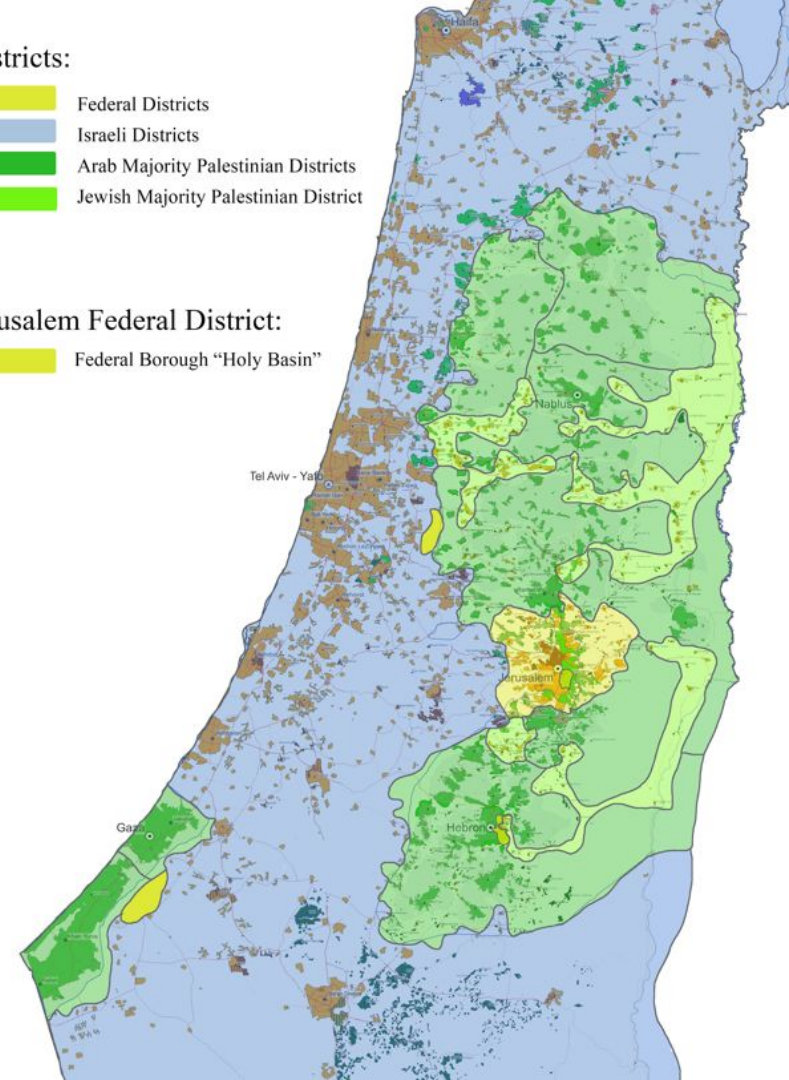


Districts:

-  Federal Districts
-  Israeli Districts
-  Arab Majority Palestinian Districts
-  Jewish Majority Palestinian District

Jerusalem Federal District:

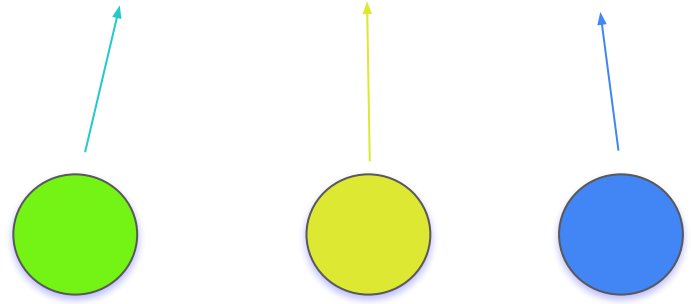
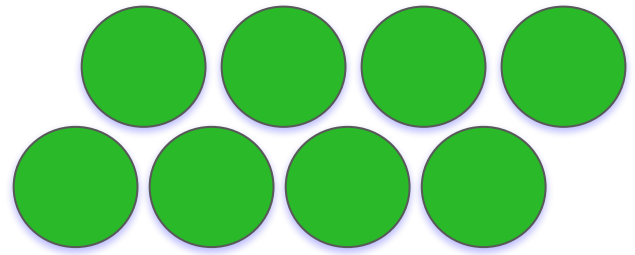
-  Federal Borough "Holy Basin"



The State of Palestine - 11 Electoral Districts



- 8 Palestinian Arab Majority Districts in the State of Palestine
- 1 Jewish Majority District in the State of Palestine
- 1 Palestinian Citizens living in Jerusalem District
- 1 Palestinian Citizens living in the State of Israel



The State of Palestine - 11 Electoral Districts

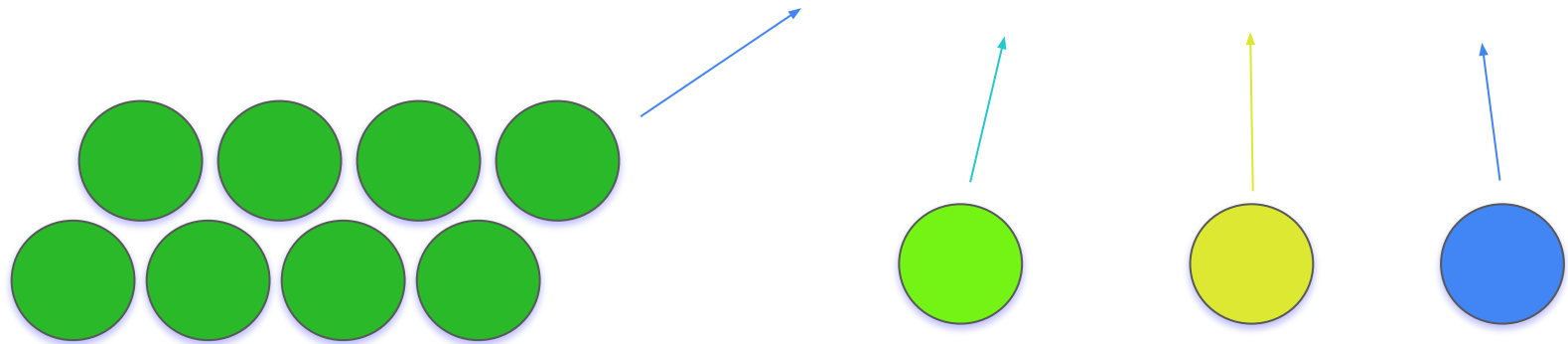


Upper House:

- 4 Representatives from each District

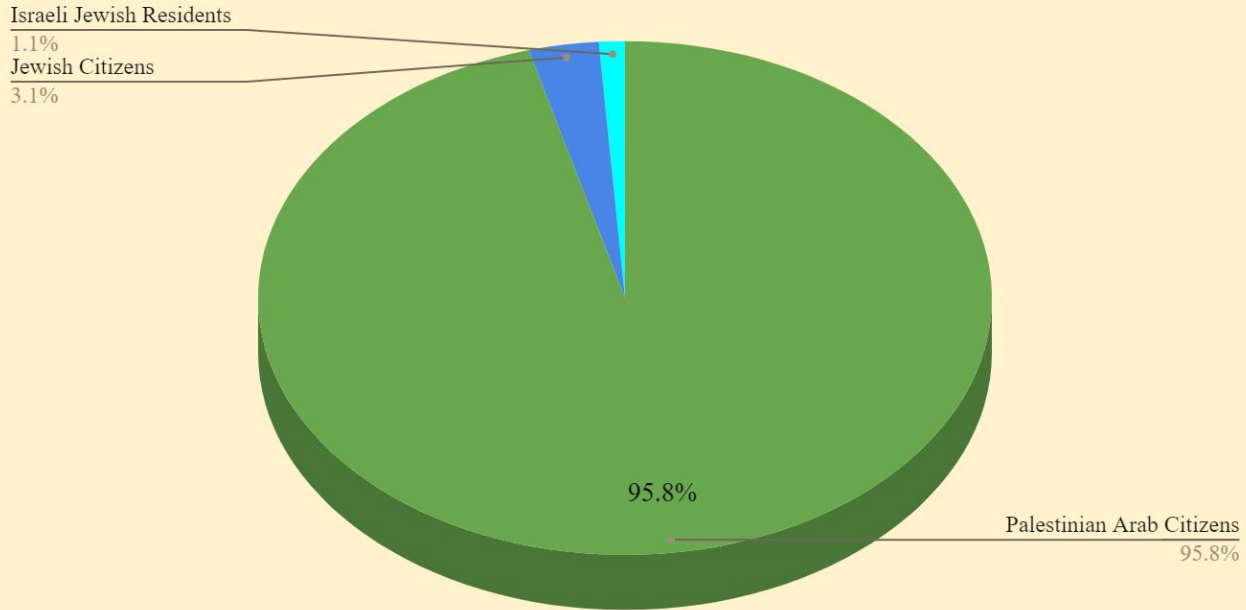
Lower House:

- 120 Representatives total
- Apportioned to District by population



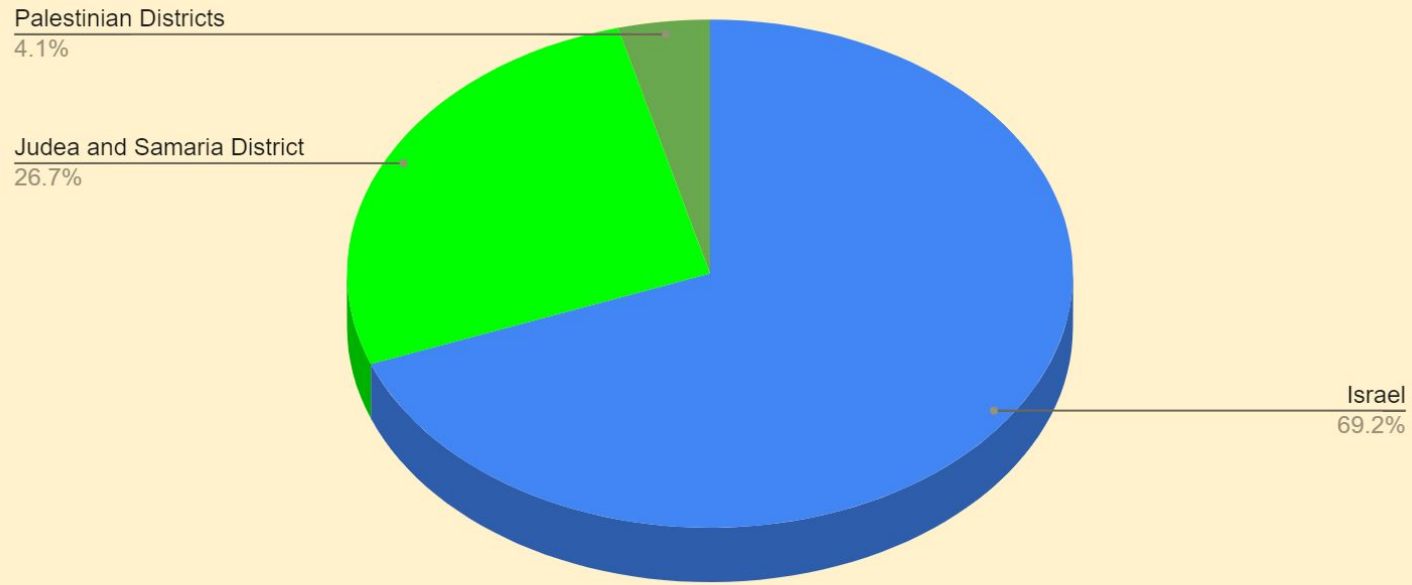
Demographics: State of Palestine

Population of State of Palestine Citizens after 20 years - Jerusalem Union



Demographics: Israelis over the Green line

Israeli population over the Green line in Jerusalem Union year 0



Federal Government

The Jerusalem Union

The Federal Government

- Legislative - Bicameral Federal Parliament
- Executive - Federal Council
- Judicial - Federal Supreme Court
- Federal Ministries



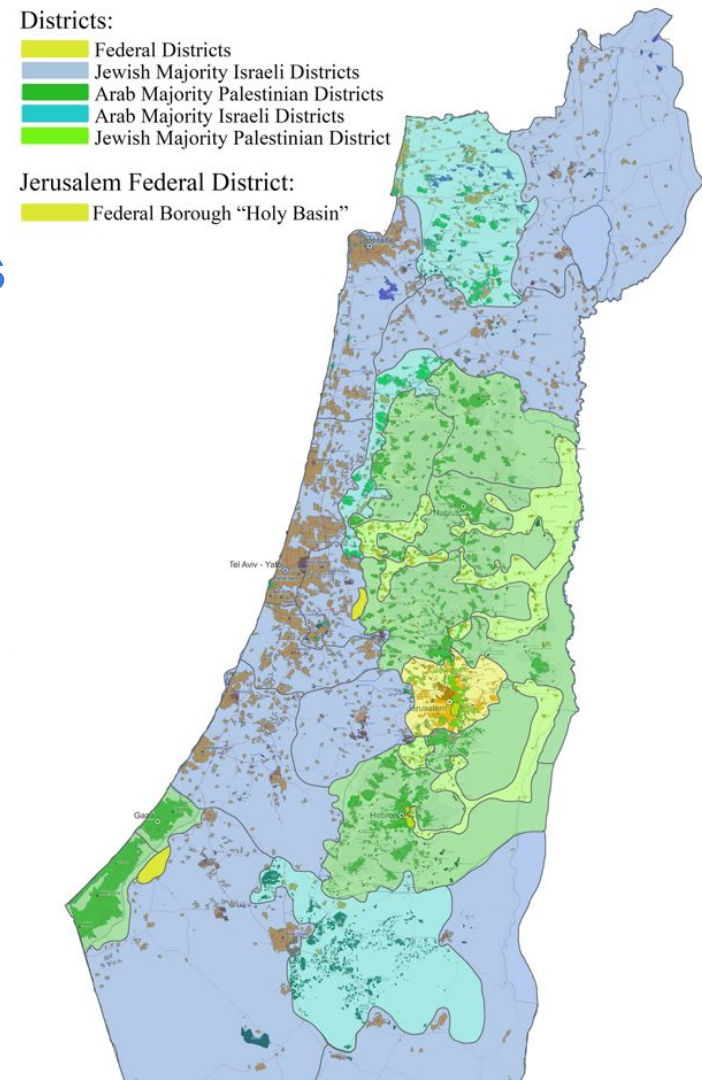
Federal Government - Legislative Branch

The Jerusalem Union

Jerusalem Union: 24 Electoral Districts

12 Jewish Israeli Majority Districts

- 10 Jewish Majority Districts of Israel
- 1 Jewish Majority District of Palestine
- 1 Israeli Boroughs of Jerusalem District



Jerusalem Union: 24 Electoral Districts

12 Palestinian Arab Majority Districts

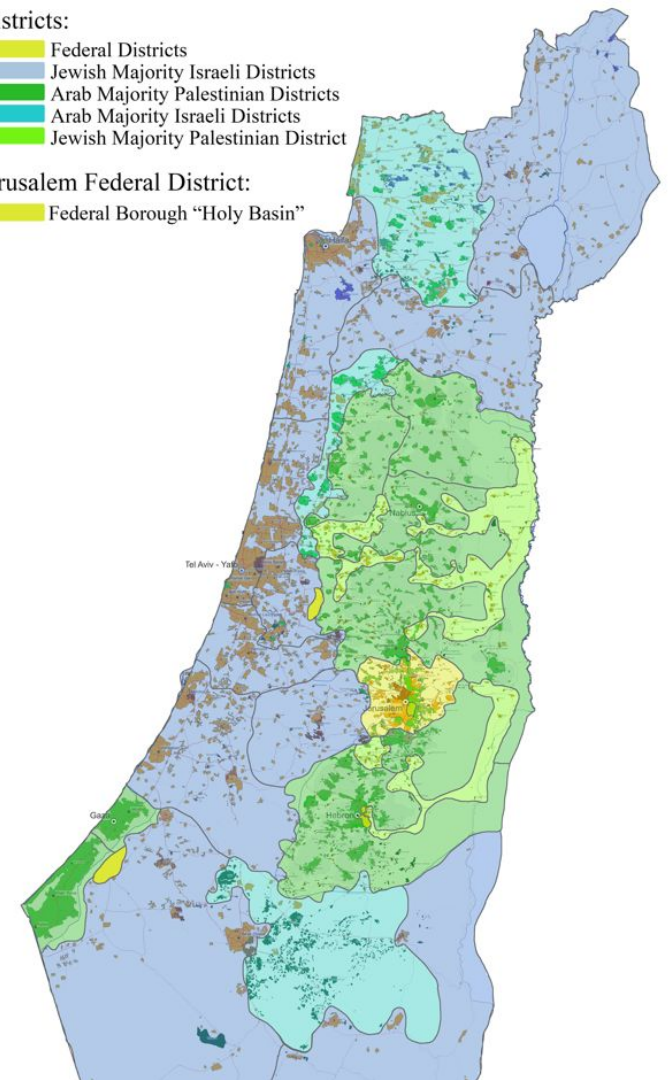
- 8 Palestinian Arab Majority Districts of Palestine
- 3 Palestinian Arab Majority Districts of Israel
- 1 Palestinian Boroughs of Jerusalem District

Districts:

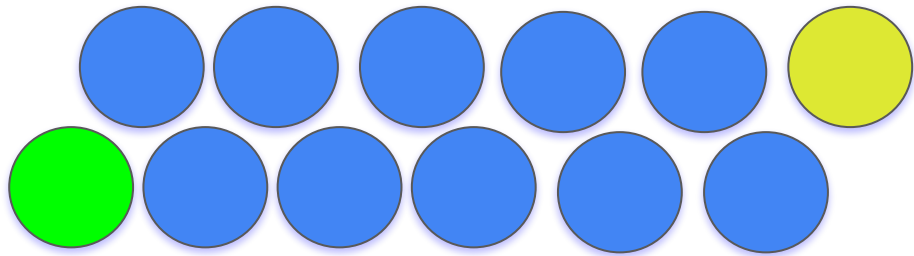
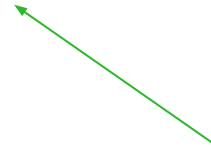
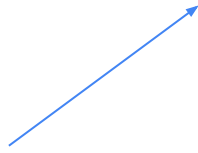
- Federal Districts
- Jewish Majority Israeli Districts
- Arab Majority Palestinian Districts
- Arab Majority Israeli Districts
- Jewish Majority Palestinian District

Jerusalem Federal District:

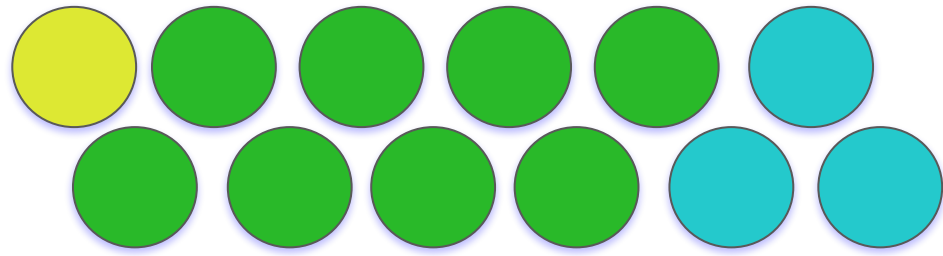
- Federal Borough "Holy Basin"



Jerusalem Union: 24 Electoral Districts



12 Jewish Israeli Majority Districts



12 Palestinian Arab Majority Districts

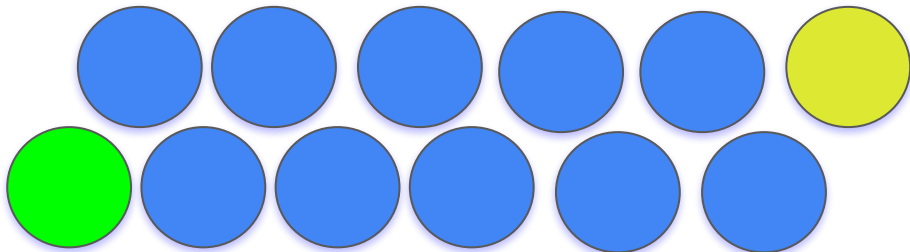
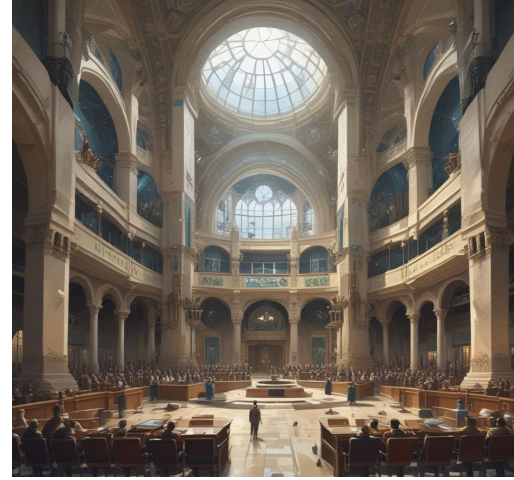
Jerusalem Union: 24 Electoral Districts

Upper House:

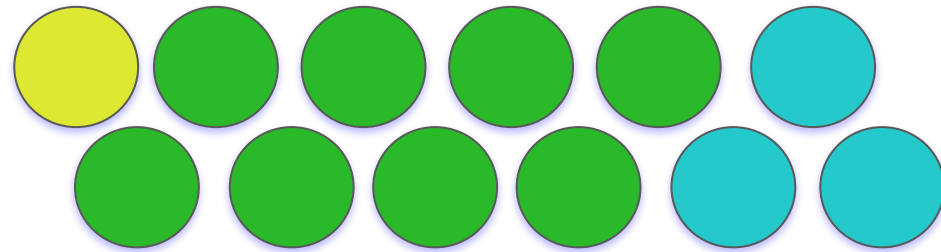
- 3 Representatives from each District

Lower House:

- 120 Representatives total
- Apportioned to District by population

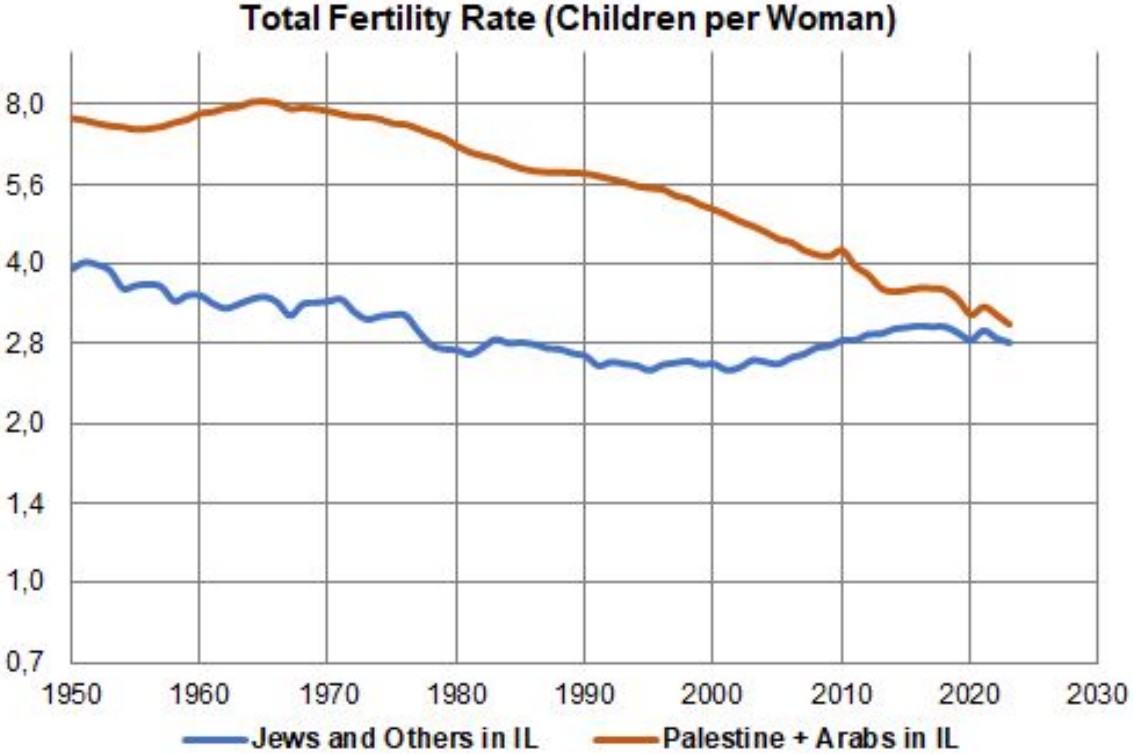


12 Jewish Israeli Majority Districts



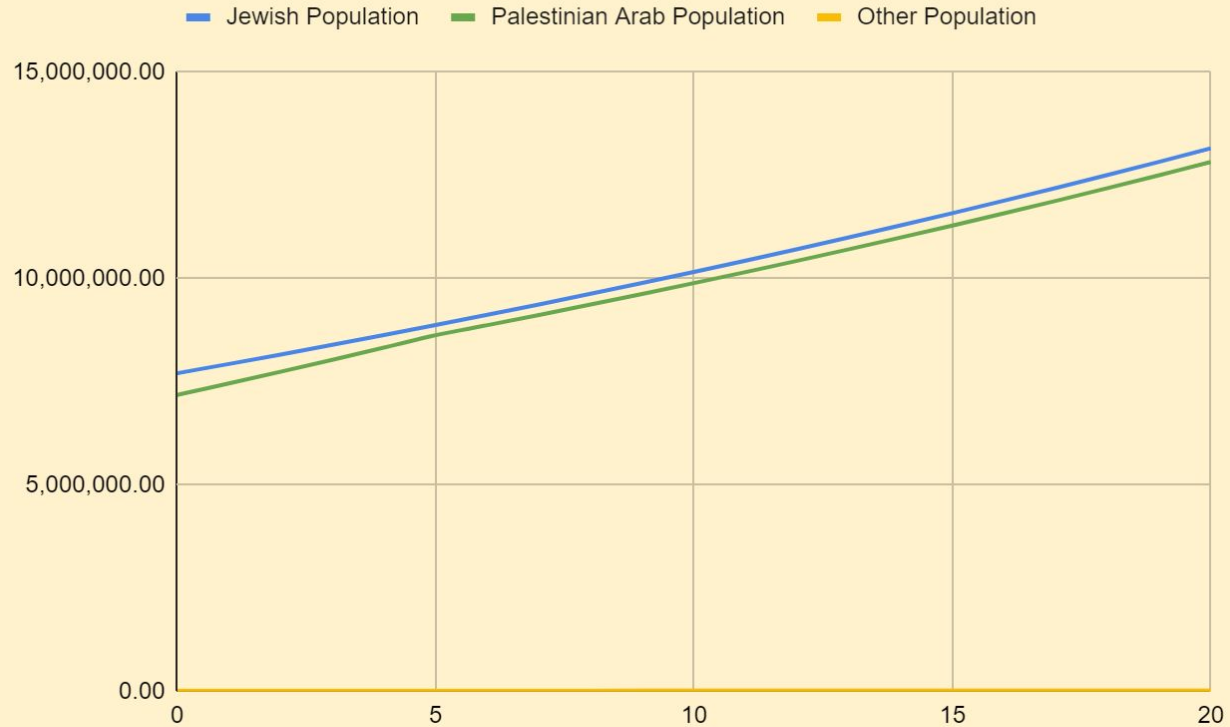
12 Palestinian Arab Majority Districts

Demographics of Israel-Palestine - Birth Rate



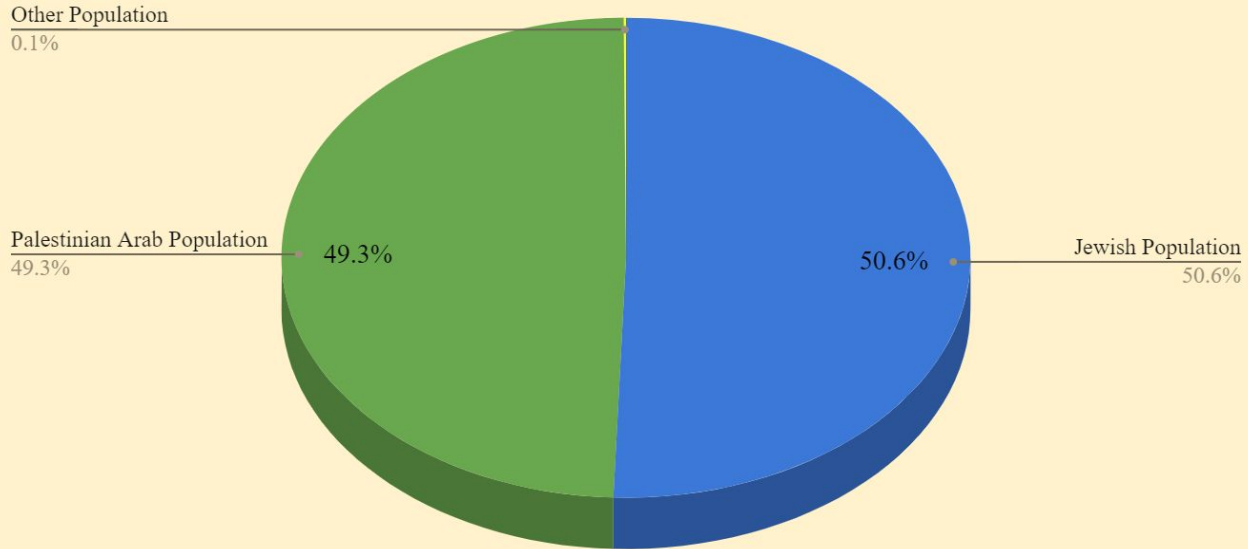
Demographics: Jerusalem Union

Population of Jews and Palestinian Arabs in the Jerusalem Union - Year 0-20



Demographics: Jerusalem Union

Population of Jerusalem Union after 20 years



Federal Government - Executive Branch

The Jerusalem Union

Federal Government Ministries

- Economic and Fiscal Policies
- Joint infrastructure
- Environmental Protection
- Regional Cooperation
- Diplomacy
- Security
- Education
- Science and Technology
- Tourism
- Sacred Sites
- Immigration



The Federal Council



Federal Government - Judicial Branch

The Jerusalem Union

Bill of Rights

- **Rights of the Individual**
- Freedom of speech
- Freedom of religion
- Personal security
- **Collective Rights**
- Self Determination
- Right of Return
- Preservation of Culture



Federal Supreme Court



Community Councils

- Cultural Autonomy for Ethno-Cultural Groups
- Representation for small minority populations
- Collective Rights
- Rights to Education in their culture and language
- Sacred sites
- Symbols and traditions



Citizenship and Immigration

- State and Union Citizenship
- Settlers for Refugees, 250,000
- New Immigrants
- Aliya and Hoq il Awda - 100,000-70,000 per year for each side
- Residency in the other State



Economic Development Plan

- Federal Development Agency
- Investment in Education and Human Capital
- Foreign Aid and Development of Industrial Sector
- Investment in Infrastructure
- Federal Economic Districts
- Merging of National Security and Public Health Care Programs



Security - Police

- State, District and Union Police Forces
- Union Police to take over much of current IDF responsibilities in the West Bank



Security - Military

- 3 phased integration of IDF into the Union
- **1st phase**, Israel pays rent to Palestine for bases, Union has observer status
- **2nd phase**, Palestine contributes to IDF and Palestinians begin to integrate into the military and Union oversight
- **3rd phase**, full integration of the IDF into the Union, IPDF



Renewed Five Year Implementation Plan - Oslo 3.0

- No new Israeli settlements over green line
- Building in East Jerusalem and Area C by annual agreement
- Agreement on IDF presence, agreement on non violence
- List of which territories get what status made public
- IDF wears body cams, accountability
- Permits for entry and work granted by states
- Palestinian Welfare Reforms
- Joint Police Force created



Compensation and Refugees

- Right of Return program
- Rebuilding symbolic number of villages
- Compensation for lost property
- Refugee Settlement Board
- 5 year plan to empty and dismantle all refugee camps and disband UNRWA



Reconciliation

- Both sides apologize for part of the conflict
- Public Reconciliation Program
- 3 Phased Reconciliation



Mutual Recognition of Historic Connection



recognize each other as fellow 'children of the land'

The Golan Heights and the Shebaa Farms

- The Union will enter negotiations with Syria and Lebanon to purchase the Golan Heights and Shebaa Farms
- Right of return for 100,000 Syrians of Golan, mostly Druze and Circassian
- Economic and Mutual Defense pact with Lebanon and Syria



Regional Integration and Trajectory for the Future

- New Middle Eastern Union
- A Federal Republic of Israel-Palestine





ERETZ-ARD
أرض-أرد



FEDERAL FORUM
المنتدى الفيدرالي
הפורום הפדרלי

The Jerusalem Union